



IPM-Software CornerStone Update Summary Version 5.0.12.0

This document provides installation instructions and a summary of program changes and enhancements.

This document printed on: Wednesday, December 16, 2009

This page intentionally left blank

Updating the Software

1. Close all open programs.
2. Insert the CornerStone CD into your CD drive.
3. The Setup Wizard should start automatically.
Note: If the InstallShield Wizard does not launch automatically, click the Start button in the lower left corner of your screen (on the Windows toolbar) and choose Run. In the Open field, type:
d:\cs_setup.exe (where d: represents your CD-ROM drive) and click OK.
4. Click the **Install CornerStone** button.
5. Click Yes to continue.
6. Continue following the directions on the Installation Wizard.
7. Click Finish when the installation is completed.
8. The CornerStone Installation wizard will reappear.
9. *Click **Convert**.
10. Verify the location of your CornerStone database and click OK.
11. Verify that you want to update from your previous version to this version by clicking OK.
12. A confirmation message will be displayed when the database has been successfully updated. Click OK.
13. Click Exit to close the installer.
14. Restart your computer.

***Note:** If you are running CornerStone over a network, Step 4 (the installation process to update CornerStone) needs to be completed for each workstation. However, the Convert process only needs to be completed **once** for the database on the **network** and should only be performed at the machine where the database is stored. Each individual workstation will not have to complete this process and can skip to step 13.

This update includes the following enhancements and program changes:

HUD Compliance Customization

- Set the MAT 10 Unit transfer defaults in Tools, Customization Options, HUD Compliance Customization.

User Maintenance

- Enter / Edit Income Limits for Tax Credit Properties.

Household Module

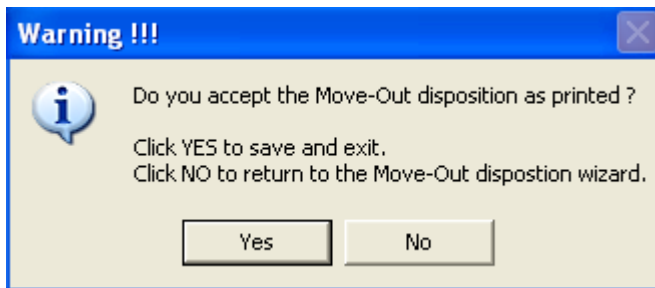
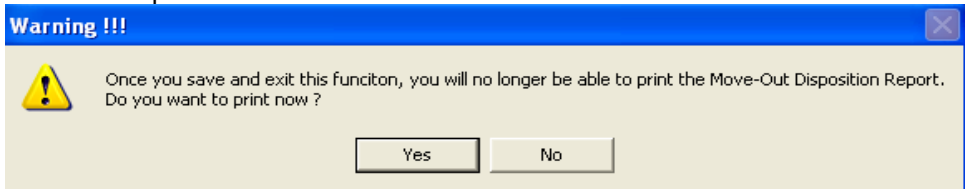
- In compliance with the HUD Forms Requirement Matrix, the OMB Approval Number and OMB Expiration Date is no longer displayed on Leases.
- Prorate divested assets – Property, Properties, Prorate Asset Imputed Income

HUD Module

- Latest version of the IPM-Software IMAX utility is Version 1.0.0.14

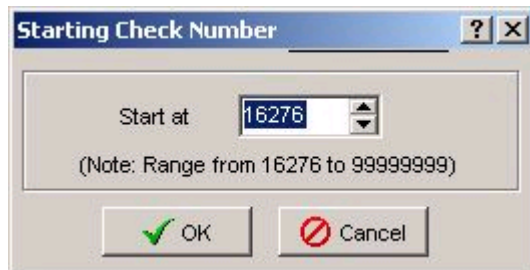
Rent Module

- Enhancements to Import IPMS Payroll
- Enhancement to Bank Reconciliation Process
- Warnings displayed to print Move-Out Disposition Report prior to saving and existing Wizard. Reprint button has been removed.



Payables Module

- Option to change the starting check number. This screen has been modified to show the range of available (unused) check numbers you can enter



- Option to reverse an invoice for any date you choose. Previously, you could only reverse for the current period. See photo below.



Ledger Module

- No changes

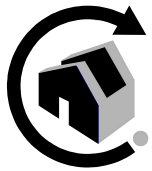
Reports Module

- Maryland Vacancy Table LIHTC Report (TC41-MD)
- Maryland Tax Credit AOCCPC LIHTC Report (TC39-MD)
- Illinois Low Income Housing Tax Credit Compliance Report (TC23-IL)
- Illinois Low Income Housing Tax Credit Compliance Report (TC37-IL)
- Illinois Owners Certification of Continuing Compliance (TC22-IL)
- Illinois Tenant Rent Record Information Report (TC38-IL)

Maintenance Module

- No changes

If you have any questions, call us at 1-800-944-5572
or
access our Live Chat at www.ipm-software.net



**INTEGRATED
PROPERTY
MANAGEMENT
SOFTWARE**

from ausmus and associates, inc.

4008 Vista Road, Suite C 250
Pasadena, Texas 77504

Phone (800) 944-5572 Fax (713) 944-2554